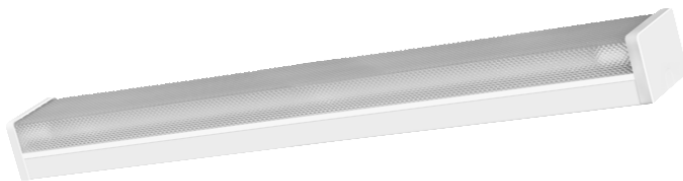


LED BATTENS

RLT1 SERIES



Interchangeable & energy efficient

SmartBright LED IP20 Diffused Battens are a practical, cost effective & energy efficient alternative/ replacement for traditional fluorescent tube lights.

FEATURES

- 5Years Warranty
- Accepted for use in energy savings projects under ESS & VEET programs
- Up to 80% more efficient than equivalent halogen or metal halide luminaires
- Uses LED (LM-80-08 Certified) chips
- Available in 1x16W, &2x16W
- IP20 Rating
- Prismatic Diffuser
- Australian & New Zealand Standards certification & approval
- Single or Twin LED tube configuration
- Three colour temperature options available 4000°K & 6500°K

BENEFITS

- Longer operating life and significantly less maintenance
- Eligible for energy savings scheme certificates in NSW and Vic.
- Reduced energy and maintenance costs
- Reliable state-of-the-art technology
- Powerful, and easily maintained with interchangeable LED tubes
- Uniform light distribution to vertical & horizontal surfaces
- High light output with reduced size
- Safe and compliant for use in Australia & New Zealand
- Easy to install
- A colour temperature for most lighting applications

*When compared with equivalent T5 or T8 fluorescent tubes.

LED Shoplight

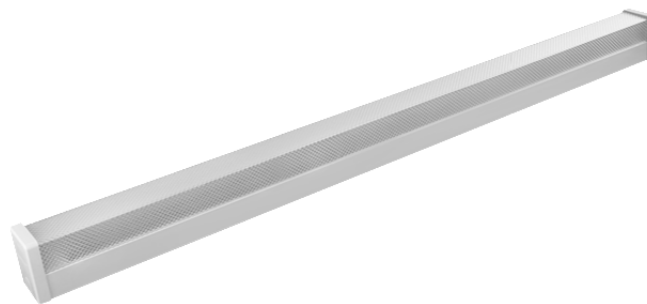
CGC1 SERIES

SmartBright

Energy Efficient Lighting

SPECIFICATIONS

Model	SB-OBRLT1-1x16W	SB-OBRLT1-2x16W
Rated Power	16W	32W
Suggested Replacement for Halogen or Metal Halide	1x36W	2x36W
Input Power Supply	240V/50Hz	
Power Factor	0.95	
Rated Luminous Flux at 5500°K	1600Lm	3200Lm
Colour Temperature	4000°K / 6500°K	
Colour Rendering Index (CRI)	CRI≥80	
Luminous Efficacy	100Lm/W	
Beam Angle	120°	
Operating Temperature Range	-10°C to 50°C	
Operating Humidity	< 95%	
Ingress Protection Rating	IP20	
Dimmable	No	
Power Cord (1.5m) & Plug	Yes	
Dimensions (d x h)	1230*68*90mm	1230*125*93mm
Rated Operating Life	30,000 hrs	
Warranty	5 years	



Product information: The descriptors and illustrations in this publication apply to the specific products and models described as at the date of issue. Under our policy of continuous product development, product specifications may change without notice. Prospective purchasers should therefore check with their supplier to ensure this publication correctly describes the products that are being offered for sale. All information supplied is to be used for general reference purposes only and is on the understanding that Smart Bright will not be liable for any loss, liability or damage of whatever kind arising as a result of reliance on such information. Colours of products illustrated are as close as printing limitations allow. Smart Bright will at all times comply with its obligations pursuant to law including Trade Practices (Australian Consumer Law) Act and Regulations.

© 2016 OptiTech International Pty Ltd ABN 13155134642. OLIG. Printed on Monza Gloss Recycled Art stock containing 55% recycled material & 45% from sustainable forests.

